

# John Stephens & COMPANY



**LIBRARIES & BOOKCASES**









## OUR HISTORY

The story of John Stephens & Company making libraries and bookcases began, almost four decades ago, in Auckland. Weatherby, as a young man, trained as a cabinet-maker at the Devonport Naval Base, so by rights he could make furniture fit for a ship. A meeting with JS & Co. was a lucky break and the "Weatherby George" team was born. Weatherby has literally made miles of bookcases and wine cellars for every type of New Zealand home.

Exceptional product design, simplicity and quality, coupled with great customer service, are JS & Co.'s benchmark. Weatherby lives and works in Kumeu and is a true artisan of his craft. He works closely with JS & Co.'s French polisher and decorative paint finish artist.

Each library or bookcase is custom-made to your specifications, and finished with your choice of wood colour or paint finish. All bookcases are made of French oak and solid brass fittings, then assembled in your home after they are polished or painted.

One simply chooses the style of bookcase, length, height, cupboards or no cupboards, cornice moulding, ladders; or Weatherby can visit and discuss your requirements on site.

Delivery time is generally 12 to 14 weeks.

John Stephens & Company looks forward to designing and building a bookcase that is uniquely yours. Contact JS & Co. to arrange a visit at your home or office for a free, no obligation consultation.

John Stephens & Company  
15 Shore Road  
Remuera  
Auckland 1050  
New Zealand  
Tel. +64 9 529 1660  
info@js.co.nz  
www.js.co.nz  
@johnstephensco



# DESIGNING YOUR BOOKCASE

JS & Co. will visit your home or office for a consultation.

**Step 1**  
Select bookcase style.

**Step 2**  
Measurement of space and bookcase configuration, including the number of bays, and the accommodation of architectural features such as doors, corners, stud height.

**Step 3**  
Fine tuning: panelled backboards or open-back shelving, cupboards, media incorporation. Bookcases over 2.4 metres in height include a rail and ladder.

**Step 4**  
Select a finish: painted or polished.

**Step 5**  
Manufacture and Installation.

The bookcase price is inclusive of consultation, manufacturing and installation.





## BOOKCASE STYLES



*Library height, double bay bookcase painted in JS Eucalyptus.*

### CLASSIC

The Classic bookcase is a nod to tradition. Crafted by hand, using the best materials, this bookcase is infused with subtle references to Georgian, Regency and Palladian design, combining the simplicity of balanced proportion with detailed backboards and fielded doors.

Finished with a lovely rail and ladder, and solid brass fittings, this is a truly timeless piece.

## BOOKCASE STYLES



*Provence bookcase with two bays and cupboards, white oak finish.*

### PROVENCE

The Provence bookcase is a balance between detail and simplicity. Inspired by a beautiful Louis Philippe cupboard and bookcase, it's lovely features include a dentil moulded cornice, wide backboards and plain shelving, sitting over two cupboard doors with fielded panels in the manner of Louis Philippe.

Finished with solid brass knobs, hinges and brass pegs allowing the shelves to be adjusted.



## CONFIGURATION



DOUBLE

TRIPLE

CORNER

MEDIA



CUPBOARD & BOOKCASE

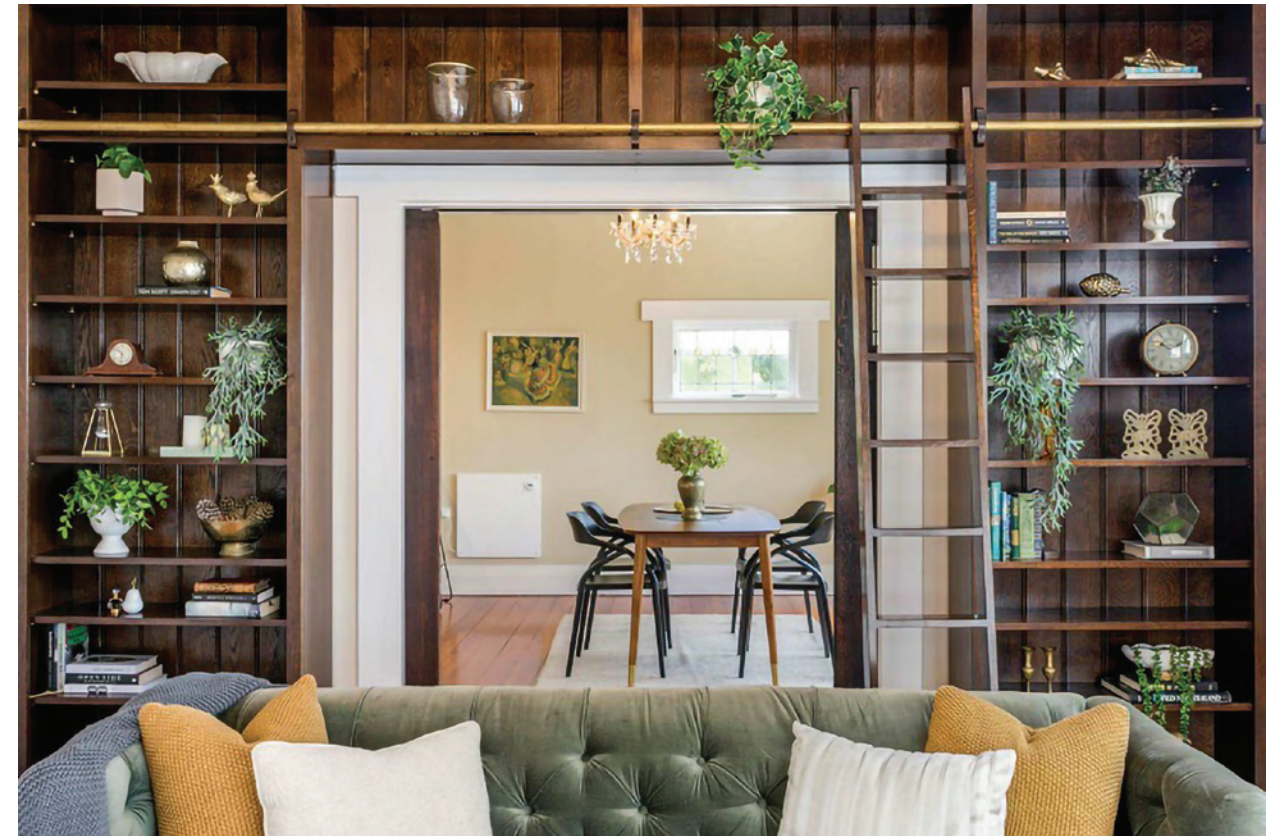
OVER DOOR

BREAKFRONT

## STANDARD SIZES

MODEL	WIDTH	DEPTH	HEIGHT
SINGLE	800	300	2200
DOUBLE	1600	300	2200
DOUBLE LIBRARY	1600	400	2600
TRIPLE	1900	300	2200
MEDIA UNIT	1600	400	2200
BREAKFRONT FOUR-BAY	3200	400	2600
BREAKFRONT FIVE-BAY	4000	400	2600

All standard sizes are customisable to your requirements.



Classic overdoor bookcase, finished in dark oak polish.



Classic four-bay bookcase with rail and ladder, plain fielded cupboards, finished in satin black.



## STANDARD DETAILS



### RAIL AND LADDER

The library height bookcases, of 2.4m and above, look so good with a ladder and brass rail.

## OPTIONAL DETAILS



### BACKBOARDS

Bookcases come with panelled backboards, however these can be left open if preferred.



### HARDWARE

Solid brass knobs and hinges; pegs to allow shelving heights to be adjusted.



### CUPBOARDS

Bookcases can include a horizontal break with cupboards at the base.

*Provence bookcase.*

*Classic bookcase.*







## WINE CELLARS



## WINE CELLARS



## WINE CELLARS

JS & Co. bookcases can be easily adapted to accommodate a wine cellar. Instead of shelving, cedar wine racks are installed into the bookcase frames.



# LIGHTING



## VAUGHAN DESIGNS LIGHTING

John Stephens & Company are proud agents for Vaughan Designs, an established and highly-regarded lighting company based in London's Chelsea Harbour.

Vaughan's collection covers a spectrum of styles and eras and happily includes a variety of options for a library setting.



## FINISHES



WHITE OAK



WARM OAK



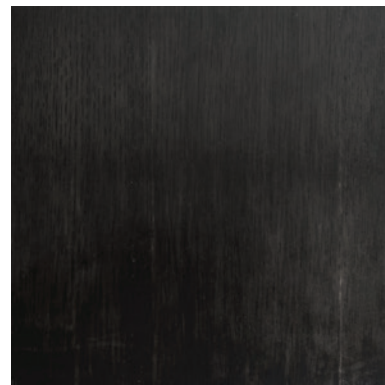
ANTIQUE BROWN



CHESTNUT



DARK OAK



SATIN BLACK

## WOOD FINISHES

Finishes include painted, french polished, lacquered, stained or waxed. The majority of bookcases are wax polished, which gives excellent patina whilst also protecting the timber.

Shown here are JS & Co.'s most common wood finishes, inspired by our antique collection.

## FINISHES



GUSTAVIAN WHITE



DOVE GREY



LIME WASH



GUSTAVIAN GREY



EUCALYPTUS



NORDIC GREY

## PAINT COLOURS AND FINISHES

JS & Co. has developed a core colour range, shown here in a flat matte finish.

JS & Co.'s highly skilled decorative painter can provide any finish for painted items, ranging from flat matte or eggshell, to antiqued or gessoed.

The colours shown here are as accurate as possible however we do recommend that you view samples in our showroom.





John Stephens & Company  
15 Shore Road  
Remuera  
Auckland 1050  
New Zealand  
Tel. +64 9 5291660  
info@js.co.nz  
www.js.co.nz  
© johnstephensco